



**TRIDENT
PLACE
HATFIELD**

TRIDENTPLACEHATFIELD.COM

BUILDING 3
75,735 SQ FT

BUILDING 4
38,513 SQ FT



Trident Place is situated on Hatfield Business Park, a high calibre mixed use park that is home to a wide range of well known businesses and sectors. Alongside the distinguished business community you will find cutting-edge technology labs, luxury car dealerships and a busy conference centre. With 2,000 homes and the University of Hertfordshire campus nearby, there's an impressive talent pool of future employees. When it comes to fitness and relaxation, our leisure and sporting facilities are second to none, including the UK's largest David Lloyd health club.



Explore the possibilities for your business, in a place where variety, flexibility and choice come as standard. Trident Place is a prestigious and well-connected campus with six office buildings offering a range of flexible workspace sizes and a choice of interior specifications. Extensive refurbishment is underway to transform the atrium and café in buildings 3&4, and the office space in building 4.



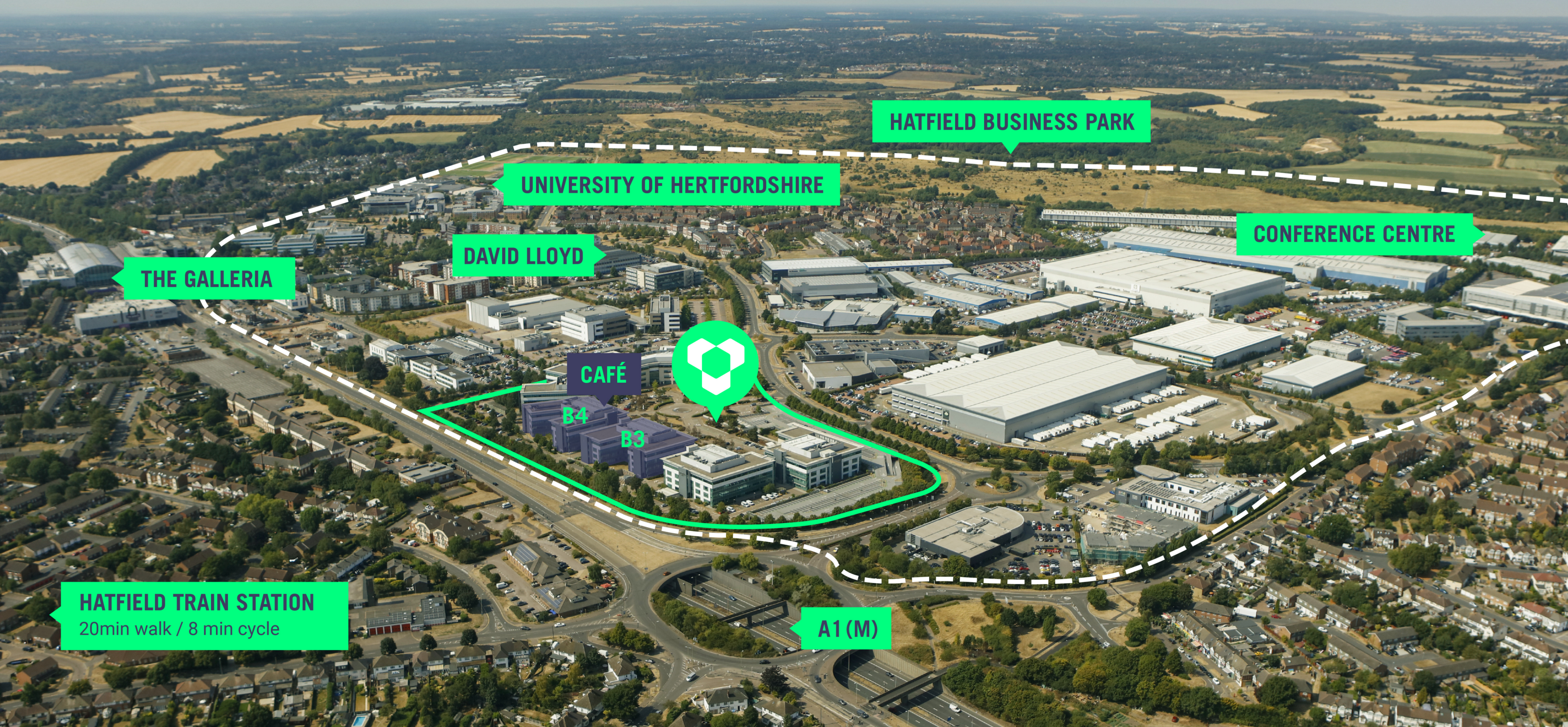
VARIEITY

FLEXIBILITY

CHOICE



Situated adjacent to the A1(M), on the edge of Hatfield town centre and at the heart of Hatfield Business Park, Trident Place could not be better positioned for your business and staff.



HATFIELD BUSINESS PARK

UNIVERSITY OF HERTFORDSHIRE

CONFERENCE CENTRE

THE GALLERIA

DAVID LLOYD

CAFÉ

B4

B3

HATFIELD TRAIN STATION
20min walk / 8 min cycle

A1 (M)

BUILDING 3

17,880 SQ FT – 75,735 SQ FT
(1,666 SQ M – 7,039 SQ M)

Prominently positioned at the centre of the Park, Building 3 is connected to Building 4 via the impressive atrium reception that provides easy access to the café, plus co-working areas and breakout seating for guests. Soon to undergo a major refurbishment, Building 3 will offer the choice of full occupation as a headquarters building, or availability on a floor-by-floor basis.



75,735 SQ FT

Available

242

Parking spaces (ratio 1:313 sqft)

18,975 SQ FT

Floorplates

HQ

Opportunity for a single occupier

7,000 SQ FT

Shared atrium

GRADE A

Refurbished office and breakout spaces



CGI



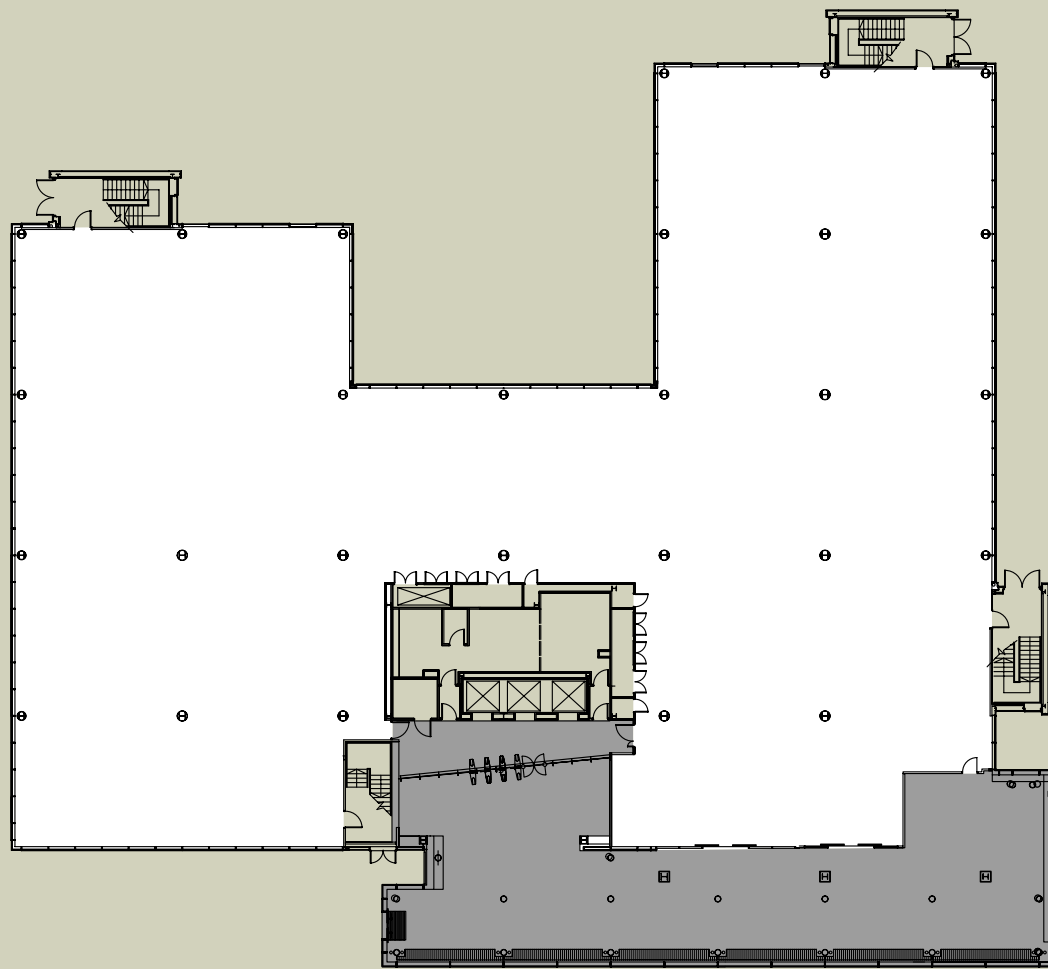
CGI



CGI

SCHEDULE OF AREAS

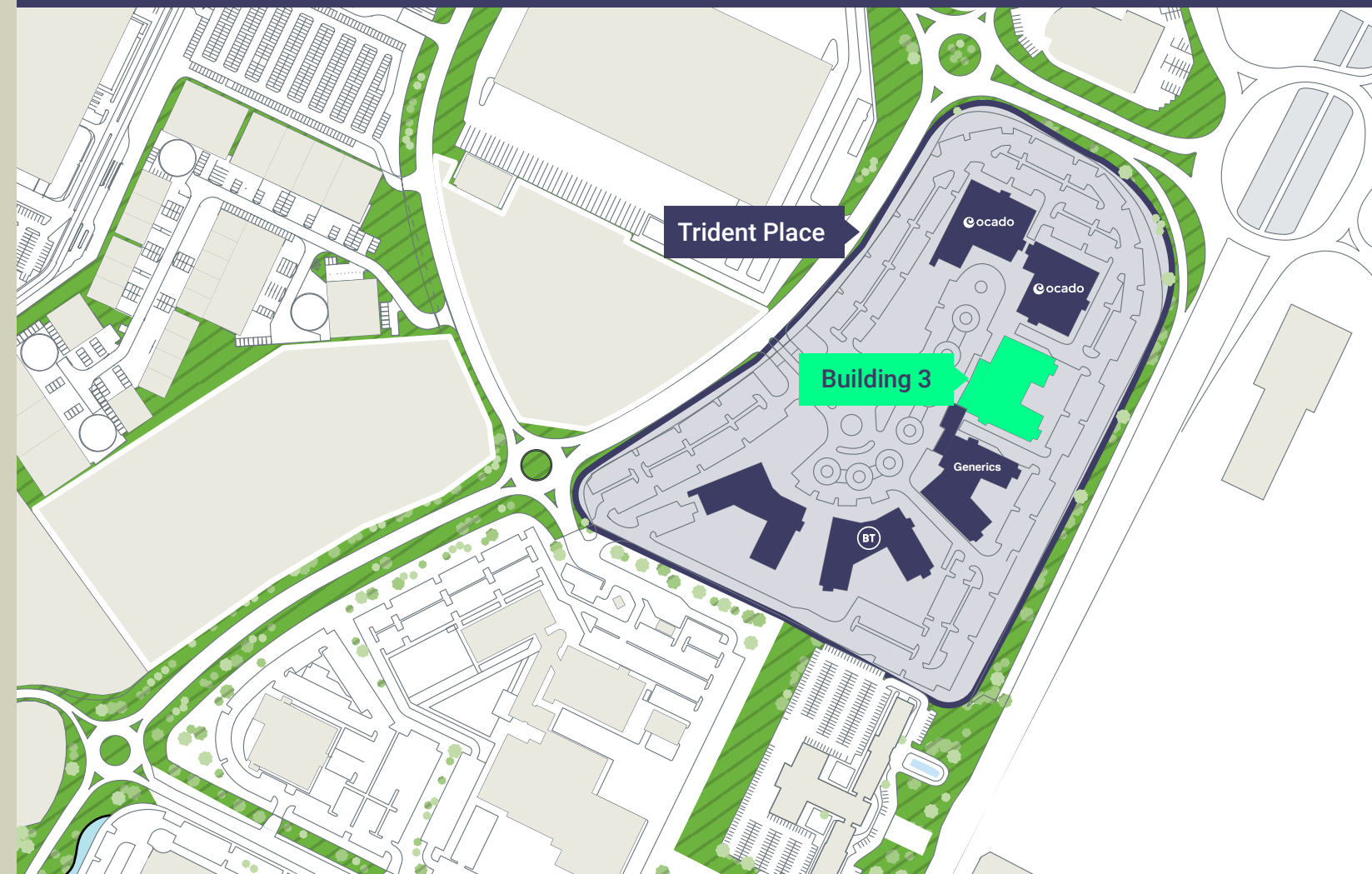
Area	sq ft	sq m
Third Floor	19,905	1,849
Second Floor	18,975	1,762
First Floor	18,975	1,762
Ground Floor	17,880	1,666
Total	75,735	7,039
Shared Atrium	7,000	650



GROUND FLOOR AND SHARED ATRIUM

BUILDING SPECIFICATION

-  New VRF air conditioning system
-  Raised access floor
-  Target EPC A
-  New metal ceiling tiles
-  Shower provision
-  On site café
-  New LED lighting
-  Target BREEAM Very Good
-  24/7 access and security
-  Male/female/disabled WCs on each floor
-  On site break-out facilities
-  242 parking spaces (1:313 sq ft)
-  Electric Car charging points
-  Designated cycle spaces
-  3 x passenger lifts



BUILDING 4

**8,650 SQ FT – 38,513 SQ FT
(807 SQ M – 4,414 SQ M)**

Designed to offer the flexibility modern businesses require, Building 4 provides the choice of office space on a part floor-by-floor basis from 8,650 sq ft, or whole floors of 20,000 sq ft. It's connected to Building 3 via the impressive atrium reception that provides both buildings with easy access to the café, co-working areas and breakout guest seating.



38,513 SQ FT

Available

19,421 SQ FT

Floorplates (8,000-19,421 sq ft)

7,000 SQ FT

Shared atrium

242

Parking spaces (1:313 sq ft)

CAFÉ

New café and breakout spaces

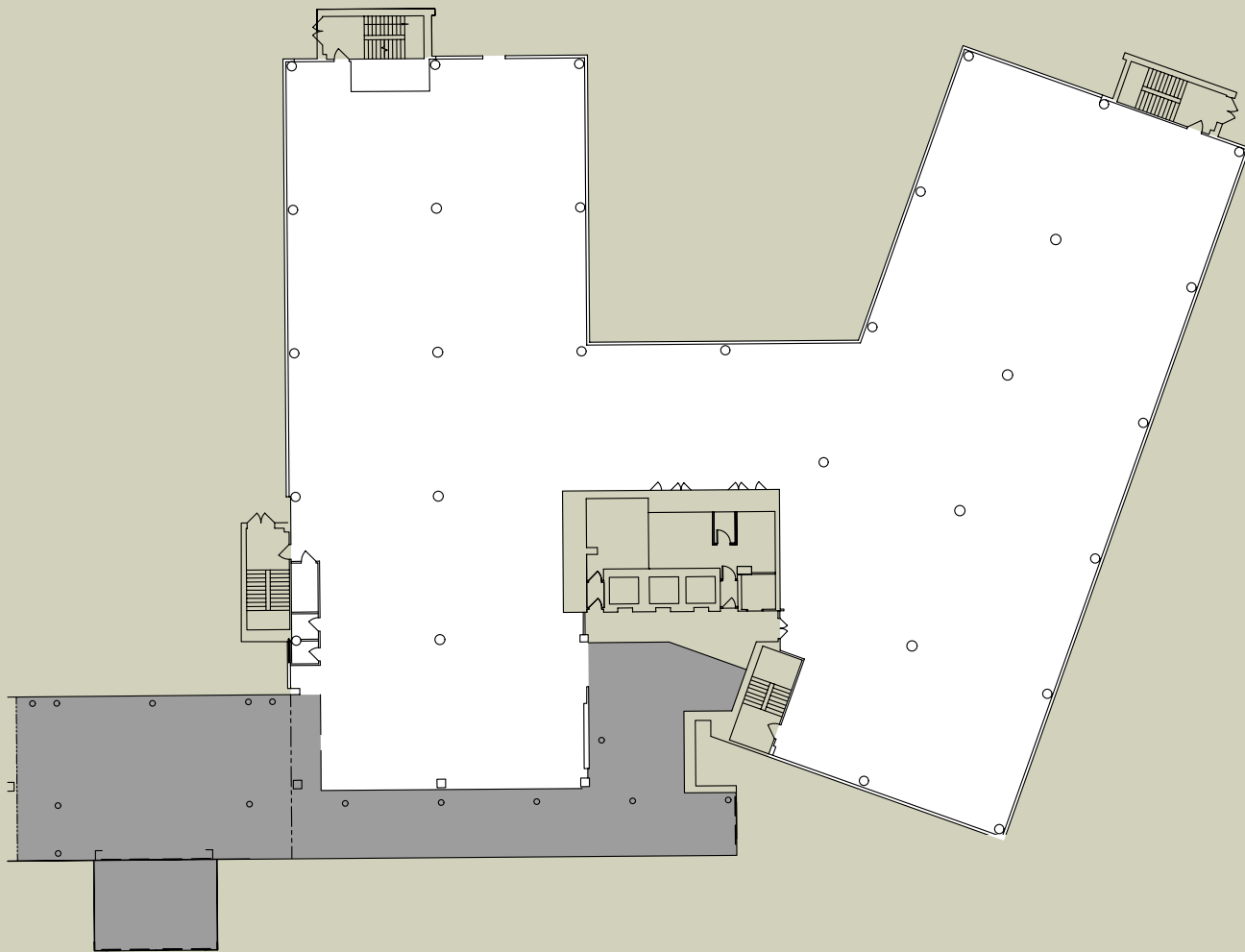
GRADE A

Refurbished office and breakout spaces

















SCHEDULE OF AREAS

Area	sq ft	sq m
Third Floor	Let	
Part Second Floor	8,692	807
First Floor	19,391	1,802
Ground Floor	10,430	1,805
Total	38,513	3,577
Shared Atrium	7,000	650



GROUND FLOOR AND SHARED ATRIUM

BUILDING SPECIFICATION

-  New VRF air conditioning system
-  Raised access floor
-  On site café
-  New metal ceiling tiles
-  Target BREEAM Very Good
-  24/7 access and security
-  New LED lighting
-  On site break-out facilities
-  242 parking spaces (1:313 sq ft)
-  Male/female/disabled WCs on each floor
-  Designated cycle spaces
-  3 x passenger lifts
-  Electric Car charging points
-  Target EPC B



Hatfield Business Park is a true mixed-use development which provides variety in every way. It's home to a diverse business community, laboratories for science & tech, a conference centre and franchises for luxury car dealerships. It includes residential housing, a university campus and many leisure and sporting facilities.



If you're looking for a place that offers a choice of amenities to suit a variety of lifestyles, it's here in Hatfield Business Park. Work out and play hard at the UK's biggest David Lloyd health club. Enjoy top class indoor and outdoor sporting facilities at the University Sports Village. Visit The Galleria to check out the latest movies, explore the many food and drink options, and do a spot of shopping. Everything you need, all in one place.

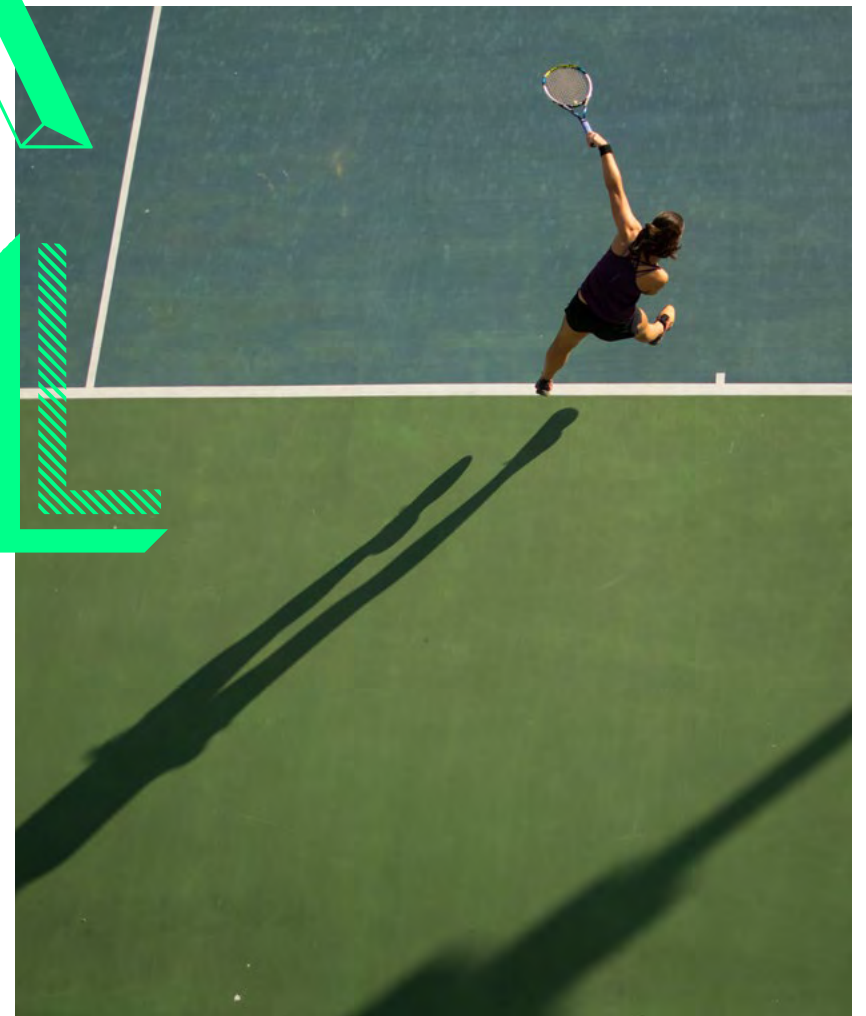
LOCK



STOCK



BARREL





EVERYTHING

FOR

EVERYONE



Trident Place



HOP

SKIP

JUMP

Trident Place is superbly connected whether you choose to travel by train, plane or automobile. Adjacent to the A1(M) there's fast connectivity to major motorways, airports and central London. Everything that modern business requires.

Road Distance



Luton Airport	21 miles
Central London	23 miles
Stansted Airport	29 miles
Heathrow Airport	32 miles
Cambridge	39 miles
Milton Keynes	41 miles
Northampton	53 miles

Rails Journey Times



Kings Cross	26 mins
Watford	1 hr 11 mins
Cambridge	1 hr 13 mins
Peterborough	1 hr 20 mins
Kings Cross/St Pancras to Paris	2 hr 15 mins

Bus Route



Welwyn to St Albans & Borehamwood	601
Hatfield Station to St Albans & Watford	602
Harpenden & Luton to Cockfosters	610
Welwyn to St Albans & New Greens	653
Hatfield Station to Barnet & Queensbury	614
Stevenage to Bricket Wood and Watford	635
Hertford & Broxbourne to Hatfield	341

Airport Times



Luton Airport	26 mins
Stansted Airport	45 mins
Heathrow Airport	52 mins

AGENTS



Matt Willcock
m: 07920 117 257
matt.willcock@cbre.com

Paul Smith
m: 07730 816 995
paulqsmith@brayfoxsmith.com

Dom Clarke
m: 07766 721 036
dom.clarke@cbre.com

James Shillabeer
m: 07824 663 594
jameshillabeer@brayfoxsmith.com

Alex Burton
m: 07920 424 770
alex.burton@cbre.com

Claudio Palmiero
m: 07896 205 786
claudiopalmiero@brayfoxsmith.com

TRIDENTPLACEHATFIELD.COM

**TRIDENT PLACE
HATFIELD BUSINESS PARK
AL10 9BW**

Design
blast.co.uk

Important Notice

CBRE and Bray Fox Smith, their clients and any joint agents give notice that: They are not authorised to make or give any representations or warranties in relation to the property either here or elsewhere, either on their own behalf or on behalf of their client or otherwise. They assume no responsibility for any statement that may be made in these particulars. These particulars do not form part of any offer or contract and must not be relied upon as statements or representations of fact. Any areas, measurements or distances are approximate. The text, photographs and plans are for guidance only and are not necessarily comprehensive. It should not be assumed that the property has all necessary planning, building regulation or other consents and CBRE and Bray Fox Smith have not tested any services, equipment or facilities. Purchasers must satisfy themselves by inspection or otherwise.

BE

HERE

NOW